

# LAURA ASHLEY

SINCE 1953

RUG COLLECTION 2023



BRINKE&CAMPMAN





B&C



# LAURA ASHLEY

SINCE 1953

“Inspired by the rich heritage of the Laura Ashley archive, this beautiful collection of rugs and doormats has been created to complete the timeless look of the world of Laura Ashley. With a touch of British charm, this rug collection brings signature prints and familiar patterns together in colour ranges that perfectly complement the paint, wallpaper and fabric collections. Handmade with materials like wool, cotton and bamboo silk, these gorgeous rugs add a welcoming and homely feel wherever you lay them.”







*“Decorating isn’t about colours, carpets and textiles.  
It’s about expressing your personality”*

*Laura Ashley*



## Catarina

Timelessly elegant the Catarina design displays a repeat leaf motif outlined in a half circle. This rug is hand tufted in 100% wool. The wool is a New Zealand blended wool to create a softness and luxury to every interior. The deepened half circles and border lines add an extra refined touch to the rug.

### Catarina Gold, Fern

100% pure wool

Handtufted cut pile

140 x 200 cm / 4'7" x 6'7"

170 x 240 cm / 5'7" x 7'10"

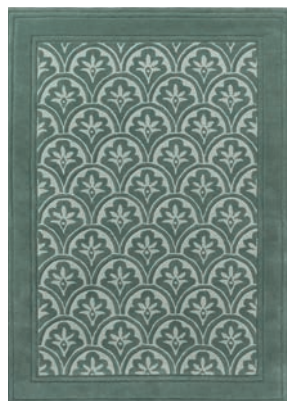
200 x 280 cm / 6'7" x 9'2"

250 x 350 cm / 8'2" x 11'6"

custom size on request



Catarina I Gold 080806



Catarina I Fern 080807



Indoor

## Eaton

Originally launched in the 2010s as a wallpaper and fabric design this subtly stylish print displays horizontal stripes of various thicknesses. Hand tufted in a wool and viscose combination with some delicate carving lines. The majority is a New Zealand blended wool with small hints of viscose to add luxury and a nice lustre to this rug.

### Eaton Charcoal, Dark Seaspray

95% pure wool, 5% viscose

Handtufted cut pile

140 x 200 cm / 4'7" x 6'7"

170 x 240 cm / 5'7" x 7'10"

200 x 280 cm / 6'7" x 9'2"

250 x 350 cm / 8'2" x 11'6"

custom size on request



Eaton | Charcoal 081004



Eaton | Dark Seaspray 081008













# Redbrook

Offering the timeless look of wood panelling, the rectangular and round Redbrook design offers an on-trend appeal. Hand tufted in a blended New Zealand wool with embossed borders in a nice viscose to give the rug a soft and rich appearance.

### Redbrook

Blush, Silver, Hazelnut, Duck Egg, Midnight

79% pure wool, 21% viscose

Handtufted cut pile

140 x 200 cm / 4'7" x 6'7"

170 x 240 cm / 5'7" x 7'10"

200 x 280 cm / 6'7" x 9'2"

250 x 350 cm / 8'2" x 11'6"

Ø 150 cm / Ø 4'11"

Ø 200 cm / Ø 6'7"

custom size on request



Redbrook I  
Blush 081802



Redbrook round I  
Blush 081802



Redbrook I  
Silver 081804



Redbrook round I  
Silver 081804



Redbrook I  
Hazelnut 081801



Redbrook round I  
Hazelnut 081801



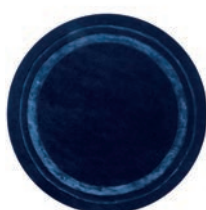
Redbrook I  
Duck Egg 081807



Redbrook round I  
Duck Egg 081807



Redbrook I  
Midnight 081808



Redbrook round I  
Midnight 081808

## Parterre

Elegant and timeless, Parterre depicts trailing ogee stems carrying an abundance of white flowers similar to wisteria. First launched in the spring of 2020, this floral print was inspired by an incredible hand painted piece of artwork from the Laura Ashley archive. With a soft hand drawn look, Parterre brings a modern feel to a vintage style pattern. Hand tufted by true craftsmanship in India incorporating these intricate patterns and details in a wool quality with hints of viscose to create a lovely lustre.



Parterre | Pale Sage 081707

### Parterre

Pale Sage

93% wool, 7% viscose

Handtufted cut pile

140 x 200 cm / 4'7" x 6'7"

170 x 240 cm / 5'7" x 7'10"

200 x 280 cm / 6'7" x 9'2"

250 x 350 cm / 8'2" x 11'6"

custom size on request

## Rye

Charismatic and pretty, this striking floral monoprint is a relaunch of a wallpaper pattern held in the Laura Ashley archive, from 1996. The Rye design incorporates a trailing floral motif, featuring large flowerheads, leaves and stems. This beautiful handloom jacquard combines three qualities of yarn. The matte wool and cotton quality in the ground are the perfect base for the highlighted floral motive in the bamboo silk pile. This unique bamboo yarn gives this quality rug an element of luxury and lustre. With this a lovely antique look and feel has been created.

### Rye

Sage, Natural

50% bamboo silk, 25% wool, 25% cotton

Jaquard weave handloom

140x200 cm / 4'7" x 6'7"

170x240 cm / 5'7" x 7'10"

200x 280 cm / 6'7x9'2"

250x350 cm / 8'2x 11'6"







Rye | Sage 081907



Rye | Natural 081901









## Newborough

As a classic pattern this Newborough feels very contemporary in its scale and subtle translation of a weathered antique look. A stunning quality manufactured on a jacquard loom in a cotton chenille yarn. Available in a rich Pale Gold, a classic Dark Seaspray or a charming neutral Steel colourway.

**Newborough**  
Steel, Pale Gold,  
Dark Seaspray

100% cotton chenille

Jacquard weave

140 x 200 cm / 4'7" x 6'7"

170 x 240 cm / 5'7" x 7'10"

200 x 280 cm / 6'7" x 9'2"

250 x 350 cm / 8'2" x 11'6"



Newborough I  
Steel 081604



Newborough I  
Pale Gold 081606



Newborough I  
Dark Seaspray 081608



## Josette

A Laura Ashley classic, Josette is an ornate damask featuring elegant chandeliers and romantic rose bouquets. This timeless design, which combines simplicity with natural glamour, has established its position as a signature pattern. Launched in 2003, Josette was inspired by a sample of antique printed silk held at the Laura Ashley archive, developed by designers to evoke a sense of classicism whilst retaining a modern edge. A stunning quality manufactured on a jacquard loom in a cotton chenille yarn in the chic hue Dove Grey.

### Josette Dove Grey

100% cotton

Jacquard weave

140 x 200 cm / 4'7" x 6'7"

170 x 240 cm / 5'7" x 7'10"

200 x 280 cm / 6'7" x 9'2"

250 x 350 cm / 8'2" x 11'6"

## Mari

A striking print, the Mari was inspired by a contemporary painted artwork added to the Laura Ashley archive in 2006. Featuring a large-scale leaf motive, this naturalistic design depicts bamboo leaves upon delicate branches in a trailing pattern. This rug is hand loomed in India. The pattern of this rug is hand shaved and carved in post-production which gives it a true handmade look.

### Mari Mineral Green

100% pure wool

Jacquard weave, handloom

140 x 200 cm / 4'7" x 6'7"

170 x 240 cm / 5'7" x 7'10"

200 x 280 cm / 6'7" x 9'2"

250 x 350 cm / 8'2" x 11'6"



Josette I  
Dove Grey 081401



Mari I  
Mineral Green 081507







*“Falling in love with the old prints in  
heirloom quilts is how our business began”*

*Laura Ashley*







## Silchester

This beautiful soft damask is designed in an arts and crafts style. The Silchester rug features subtle textured outlines of leaves bounded in a frame of hand drawn lines. The quality of the rug is a beautiful cotton handloom where the pattern is screen printed.

### Silchester

Pale Sage, Dove Grey

100% cotton

Handloom screenprint

140 x 200 cm / 4'7" x 6'7"

170 x 240 cm / 5'7" x 7'10"

200 x 280 cm / 6'7" x 9'2"

250 x 350 cm / 8'2" x 11'6"



Silchester I  
Pale Sage 081107



Silchester I  
Dove Grey 081101





## Cleavers

This charming floral design was first added to the Laura Ashley archive in the 1970s. The Cleavers features a silhouette trailing leaves and daisy shapes. This beautiful floral design has been translated in a rug with an attractive bas-relief texture in a hand carved cut and loop pile. Next to a rectangular form this rug is also available as a round shape. Wouldn't it be nice to make it the centrepiece of your living room!

### Cleavers

Natural, Seaspray,  
Duck Egg, Dark Steel

100% pure wool

Handtufted loop and cut pile

140 x 200 cm / 4'7" x 6'7"

170 x 240 cm / 5'7" x 7'10"

200 x 280 cm / 6'7" x 9'2"

250 x 350 cm / 8'2" x 11'6"

Ø 150 cm / Ø 4'11"

Ø 200 cm / Ø 6'7"

custom size on request



Cleavers |  
Natural 080901



Cleavers round |  
Natural 080901



Cleavers |  
Seaspray 080908



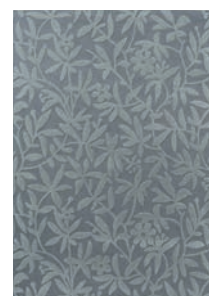
Cleavers round |  
Seaspray 080908



Cleavers |  
Duck Egg 080907



Cleavers round |  
Duck Egg 080907



Cleavers |  
Dark Steel 080904



Cleavers round |  
Dark Steel 080904









*“No two houses in the world are the same, because everyone likes to put things together in their own way”*

*Laure Ashley*



## Tulips

A springtime display of tulips mixed with daffodils; this 1990s gouache painted floral design was inspired by a piece of painted artwork found in the Laura Ashley archive. A bold pattern in a rich and soft hand tufted quality. Slightly carved to emphasize the bold spring flowers and to add a little extra texture to your room.



Tulips I China Blue 082208



Gosford I Cranberry 081300



Gosford round I Cranberry 081300

### Tulips China Blue

100% wool

Handtufted cut pile

140 x 200 cm / 4'7" x 6'7"

170 x 240 cm / 5'7" x 7'10"

200 x 280 cm / 6'7" x 9'2"

250 x 350 cm / 8'2" x 11'6"

custom size on request

## Gosford

A signature Laura Ashley print featuring gorgeous bold parrot tulips in Cranberry hues. Gosford was originally inspired by a magnificent antique painted artwork in the Laura Ashley archive. Gosford was first launched into the Laura Ashley collections as a drape fabric in the autumn/winter of 2003. This beautiful rug is hand tufted with an abundance of colours and small hints of viscose to elevate the look and feel of this handcrafted rug. Also available in two sophisticated round versions.

### Gosford Cranberry

95% pure wool, 5% viscose

Handtufted cut pile

140x200 cm / 4'7"x6'7"

170x240 cm / 5'7"x 7'10"

200x280 cm / 6'7"x9'2"

250x350 cm / 8'2"x11'6"

Ø 150 cm / Ø 4'11"

Ø 200 cm / Ø 6'7"

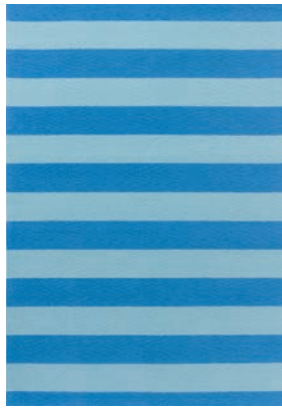
custom size on request





## Living Outdoor

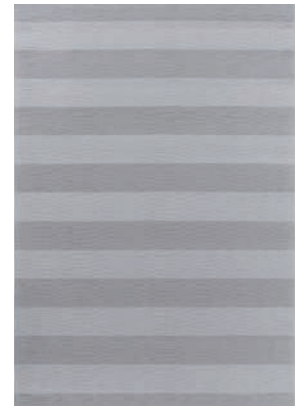
When the weather permits sitting outside with friends and family, be ready to enjoy and embrace those moments. To relax in a quiet garden after a busy day, or to start the day with breakfast on the terrace. Especially for these beautiful moments, Laura Ashley brings this collection of rugs that can be used both indoors and outdoors. These rugs are durable, weather resistant, and easy to clean.



Lille I Sky Blue 480008



Lille I Pale Ochre 480001



Lille I Dove Grey 480004

## Lille

Lille is a broad stripe design in two tonal colours to create a sophisticated and classic feel. Available in three colour compositions. The Lille Sky Blue has a bright and vivid appearance and reminds us of warm holidays on the Côte d'Azur. With their calm palette of naturals the Lille Hazelnut and Lille Dove Grey are a perfect match for your lounge area whether this is indoors or outdoors.

**Lille**  
Sky Blue, Pale Ochre,  
Dove Grey

100% polypropylene

Handhooked

140 x 200 cm / 4'7" x 6'7"

160 x 230 cm / 5'3" x 7'6"

200 x 280 cm / 6'7" x 9'2"

250 x 350 cm / 8'2" x 11'6"













## Porchester

This timelessly elegant print was inspired by a piece of antique fabric added to the Laura Ashley Home archive in 1990. The Porchester showcases stylised diamond-shaped flowerheads in a trellis-like structure. Whatever the weather, this vibrant Porchester Poppy Red rug adds energy wherever you like!

## Thorncliff Daisy

This charming design is a repeat print of blooming daisies in a fresh and friendly colour combination.

## Lilith

Launched in 1987 as a fabric part of the Laura Ashley Home Collection, the Lilith is an abstract design which features an array of colourful flowers like chrysanthemums, tulips, and roses.

**Porchester** Poppy Red  
**Lilith** Poppy Red  
**Thorncliff Daisy** Sky Blue

100% polypropylene

Handhooked

140 x 200 cm / 4'7" x 6'7"

160 x 230 cm / 5'3" x 7'6"

200 x 280 cm / 6'7" x 9'2"

250 x 350 cm / 8'2" x 11'6"



Porchester I  
 Poppy Red 480200



Lilith I  
 Poppy Red 480100



Thorncliff Daisy I  
 Sky Blue 480308



## Be welcome

To decorate your doorstep and make everybody feel welcome in your house, an array of five doormats have been developed in well-known signature prints inspired by the Laura Ashley archive. The doormats are woven in a 100% coir quality with a lovely print on top. Used in a sheltered space these doormats brighten up every door!

### Doormat all designs

100% coir

Printed

40 x 70 cm / 16" x 28"



Cleavers | Midnight Seaspray 580918



Parterre | Fern 581707







Gosford | Cranberry 581310



Tulips | China Blue 582218



Wild Meadow | Crimson 582400



Laura Ashley Collection | Indoor



Cleavers I  
Natural 080901



Cleavers I  
Seaspray 080908



Cleavers I  
Duck Egg 080907



Cleavers I  
Dark Steel 080904



Cleavers round I  
Natural 080901



Cleavers round I  
Seaspray 080908



Cleavers round I  
Duck Egg 080907



Cleavers round I  
Dark Steel 080904



Gosford I  
Cranberry 081300



Gosford round I  
Cranberry 081300



Tulips I  
China Blue 082208



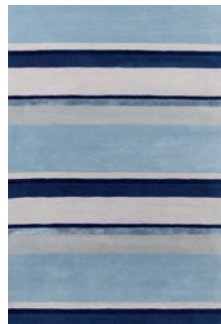
Parterre I  
Sage 081707



Catarina I  
Gold 080806



Catarina I  
Fern 080807



Eaton I  
Seaspray 081008



Eaton I  
Charcoal 081004





Redbrook I  
Silver 081804



Redbrook I  
Blush 081802



Redbrook I  
Hazelnut 081801



Redbrook I  
Duck Egg 081807



Redbrook I  
Midnight 081808



Redbrook round I  
Silver 081804



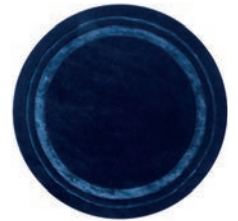
Redbrook round I  
Blush 081802



Redbrook round I  
Hazelnut 081801



Redbrook round I  
Duck Egg 081807



Redbrook round I  
Midnight 081808



Rye I  
Natural 081901



Rye I  
Sage 081907



Mari I  
Mineral Green 081507



Silchester I  
Dove Grey 081101



Silchester I  
Pale Sage 081107



Josette I  
Dove Grey 081401



Newborough I  
Steel 081604



Newborough I  
Pale Gold 081606



Newborough I  
Dark Seaspray 081608



# Laura Ashley Collection | Outdoor & Doormat



Lille I  
Pale Ochre 480001



Lille I  
Sky Blue 480008



Lille I  
Dove Grey 480004



Lilith I  
Poppy Red 480100



Porchester I  
Poppy Red 480200



Thornclyff Daisy I  
Sky Blue 480308



Gosford I  
Cranberry 581310



Tulips I  
China Blue 582218



Wild Meadow I  
Crimson 582400



Cleavers I  
Midnight Seaspray 580918



Parterre I  
Fern 581707

## B&C

At Brink & Campman we make collections of thoughtfully designed premium rugs. Brink & Campman has over 125 years of experience doing so. The craft of rug making means that no two rugs are exactly alike. The natural materials used in a handcrafted product might cause deviations in colour, texture or size.

This brochure has been created with great care. We make allowance for a degree of colour variation and cannot be held responsible for any printing errors or changes in the collection.









Australia's Exclusive Distributor

**UNITEX**  
INTERNATIONAL

53 Bourke Rd, Alexandria, NSW, 2015  
P (02) 9669 6317

E-Mail: [hello@unitexint.com](mailto:hello@unitexint.com) | Website: [www.unitexint.com](http://www.unitexint.com)

[lauraashley.com](http://lauraashley.com)

Manufactured under licence by Brink & Campman. © & © 2023 Laura Ashley Brands.